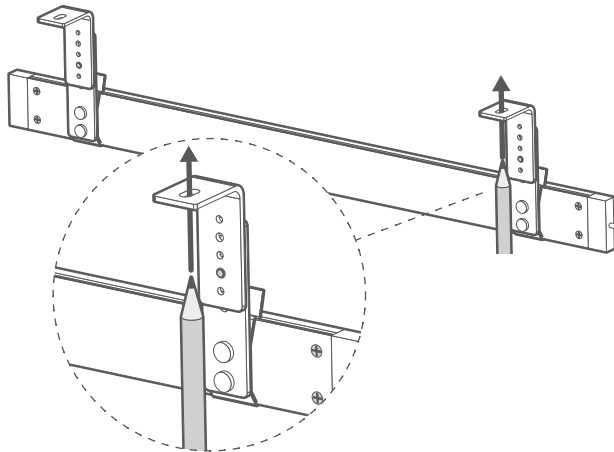
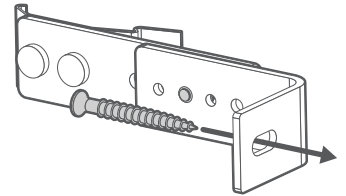
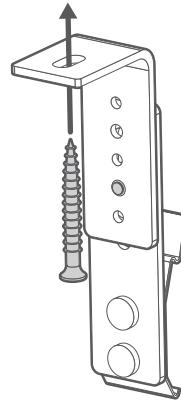


Fitting a solar charging attachment

A solar charger replaces your traditional charging plug, providing a constant and steady flow of charge for your blind's motor for as long as it remains connected. It can be left connected to your blind indefinitely, if you wish, meaning you'll never need to worry about charging your blind's motor again.

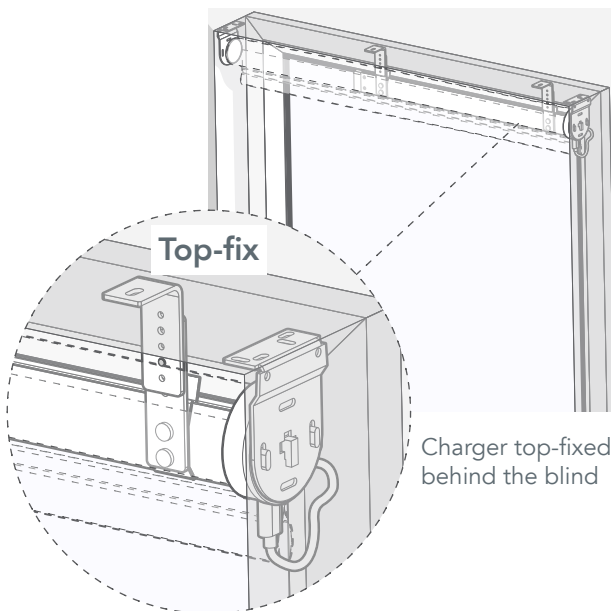


Top-fixed brackets

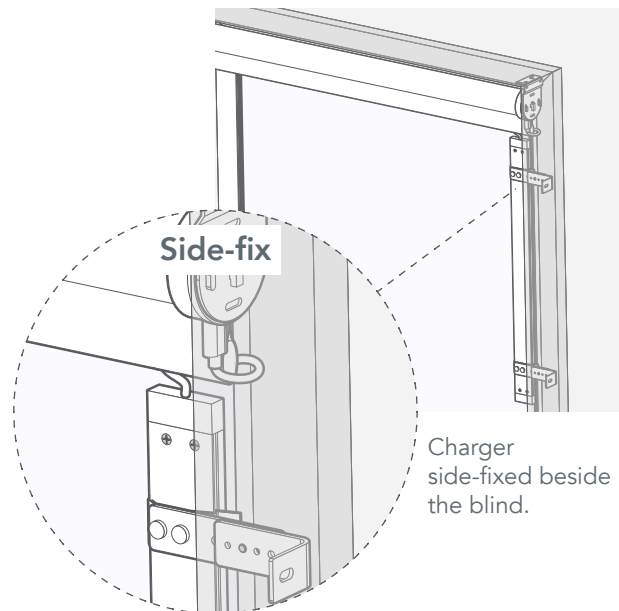


Side-fixed brackets

Decide where you would prefer to fit your solar charger, then mark out and drill the screw holes and use the fittings provided to fit the brackets. If you've already fitted the blind, we would recommend taking it down from the brackets until the solar charger is fitted.



Charger top-fixed behind the blind

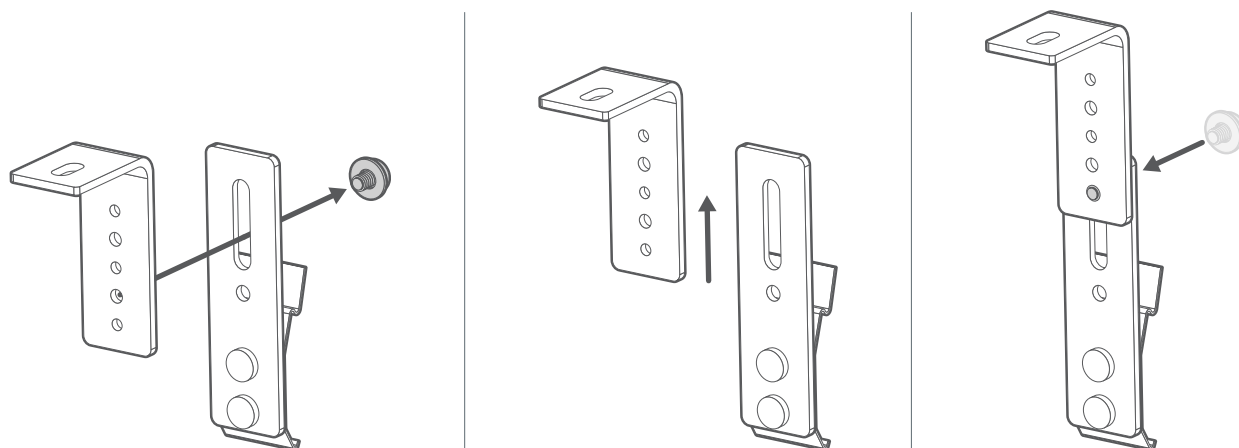


Charger side-fixed beside the blind.

The solar charging attachment should be fitted so that the black panel is facing the glass. It clips into the provided brackets, which can be either top-fixed into the top of the recess, or side-fixed into the side wall of the recess.

Top Tip

When marking out where you'll fit the solar charger, make sure that it's close to the end of the blind where the motor is fitted, so that the charging cable will reach easily.



The length of the bracket can be adjusted if necessary, if you need to move the solar panel further out into the glass area. Simply loosen the screw holding the two parts of the bracket together, make the necessary length adjustment, then tighten the screw again to secure it.